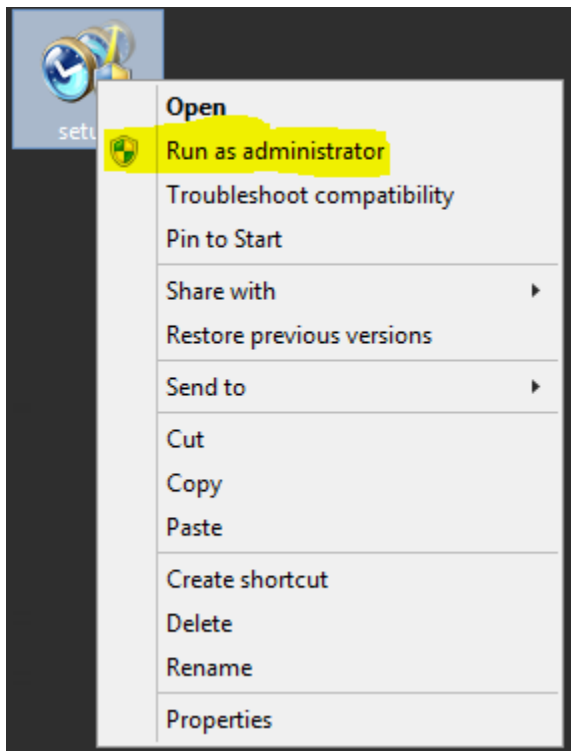


HOW TO INSTALL & UPGRADE AGENT

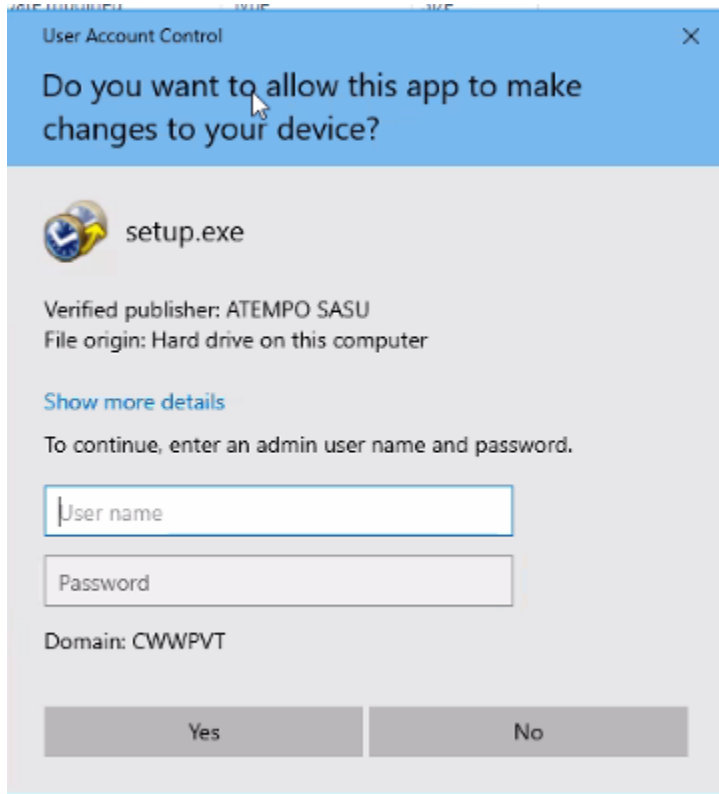
HOW TO INSTALL AGENT

STEP 1:

RUN THE SETUP FILE AS ADMINISTRATOR.

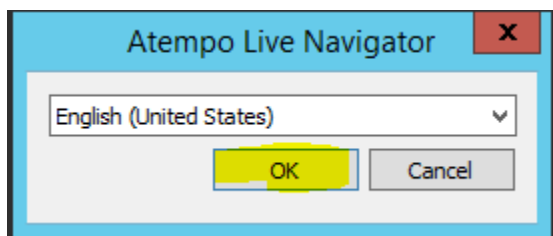


ENTER ADMINISTRATOR CREDENTIALS IF BELOW WINDOW POPUP.



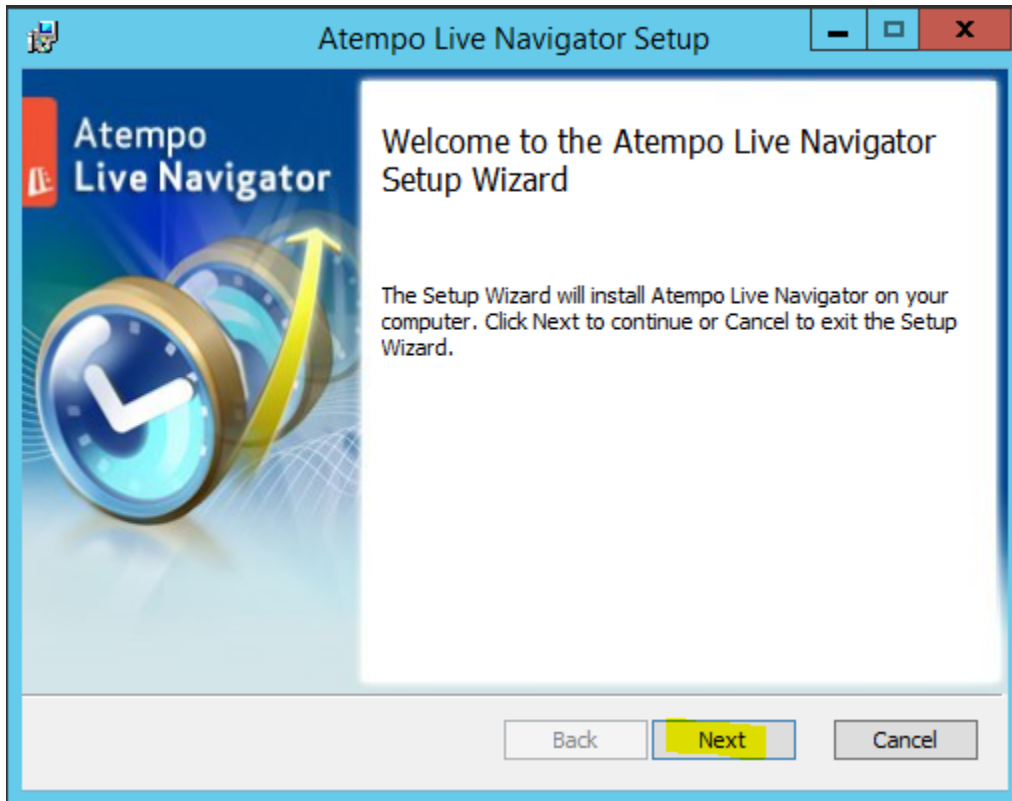
STEP 2:

SELECT LANGUAGE AND CLICK OK.



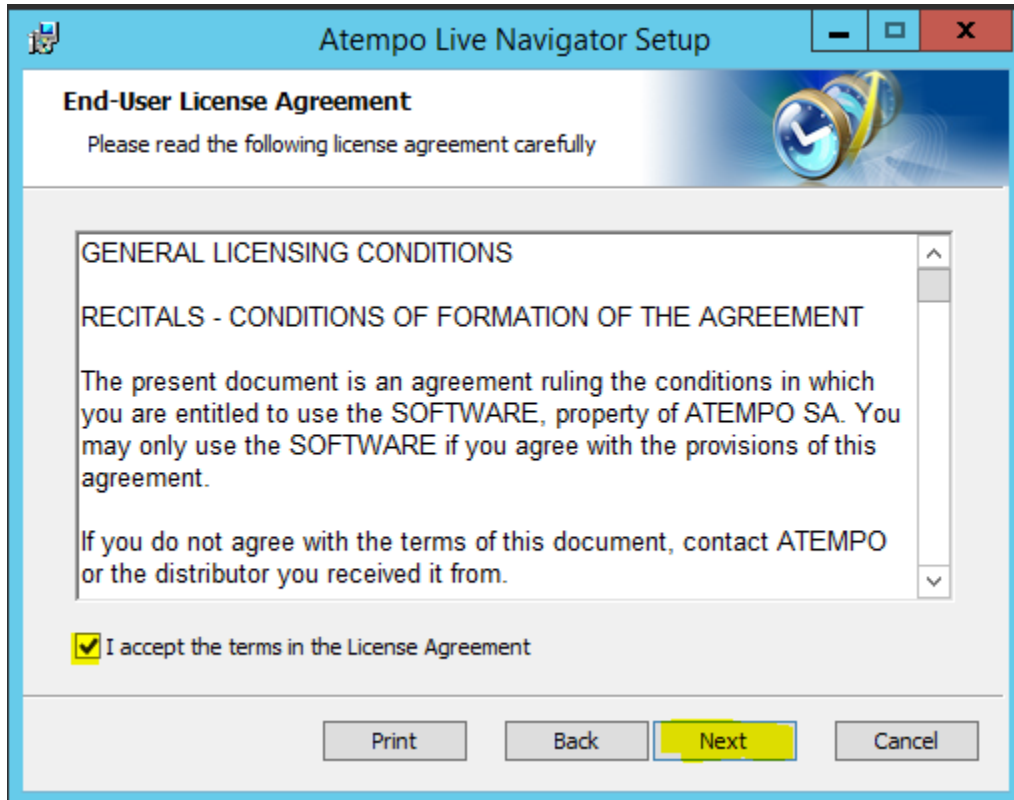
STEP 3:

CLICK ON NEXT.



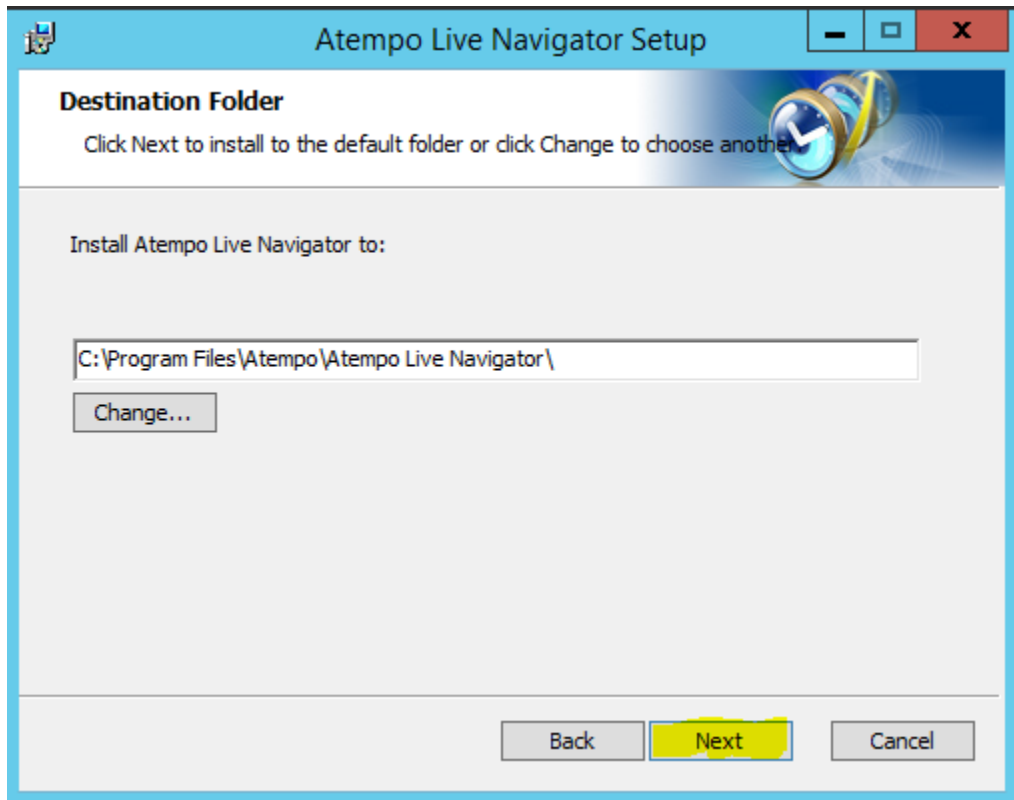
STEP 4:

ACCEPT THE LICENSE AGREEMENT AND CLICK ON NEXT.



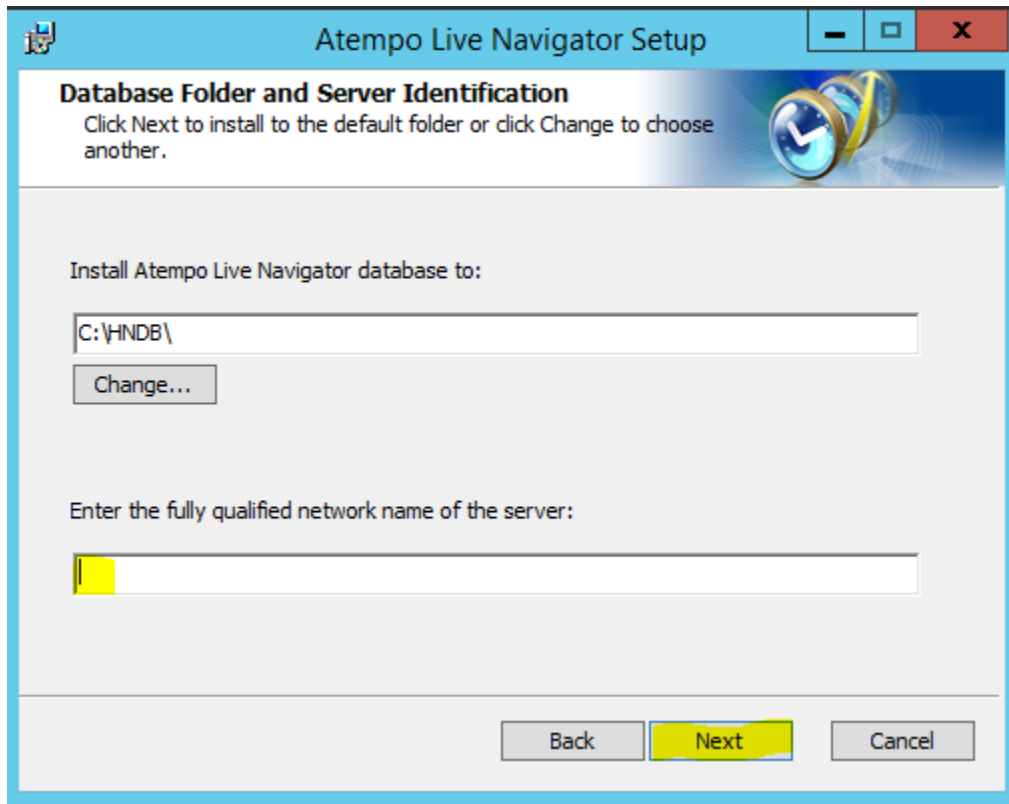
STEP 5:

CLICK ON NEXT.



STEP 6:

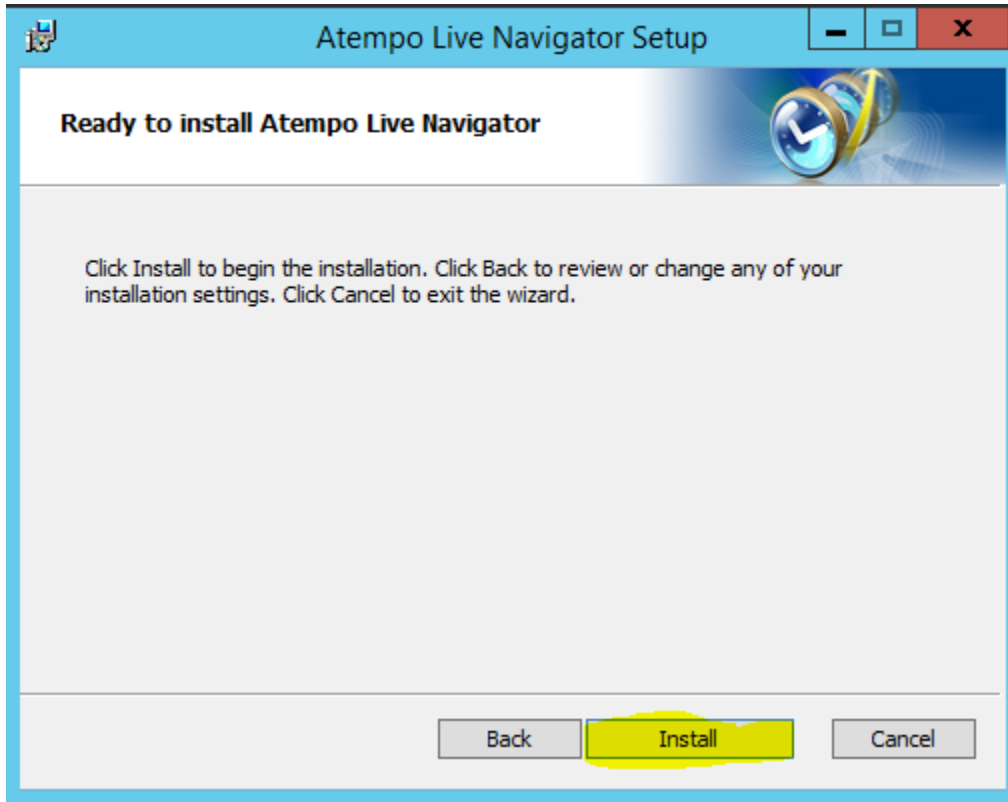
ENTER SERVER HOSTNAME/IPADDRESS AND CLICK ON NEXT.



The screenshot shows a Windows-style dialog box titled "Atempo Live Navigator Setup". The window has a blue header bar with a small icon on the left and standard minimize, maximize, and close buttons on the right. Below the header, the title "Database Folder and Server Identification" is displayed in bold, followed by the instruction: "Click Next to install to the default folder or click Change to choose another." To the right of this text is a decorative graphic of a globe with a blue arrow. The main area of the dialog contains two sections. The first section is labeled "Install Atempo Live Navigator database to:" and features a text input field containing "C:\HNDB\" and a "Change..." button below it. The second section is labeled "Enter the fully qualified network name of the server:" and features an empty text input field. At the bottom of the dialog, there are three buttons: "Back", "Next" (which is highlighted in yellow), and "Cancel".

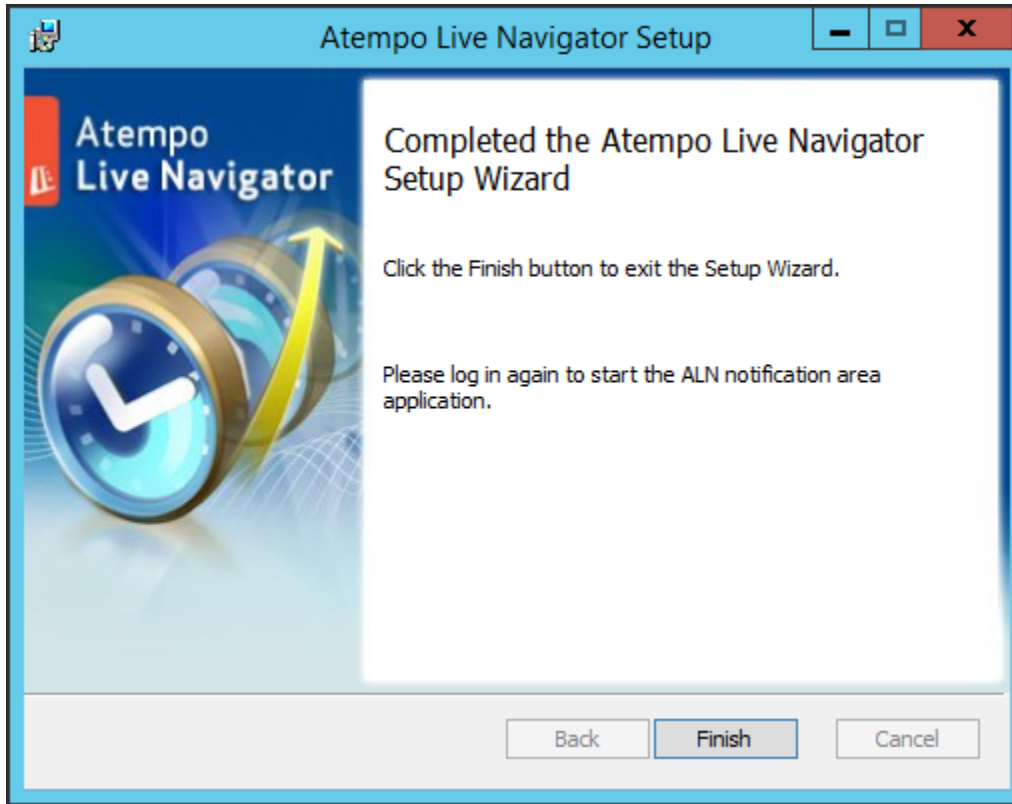
STEP 7:

CLICK ON INSTALL.



STEP 8:

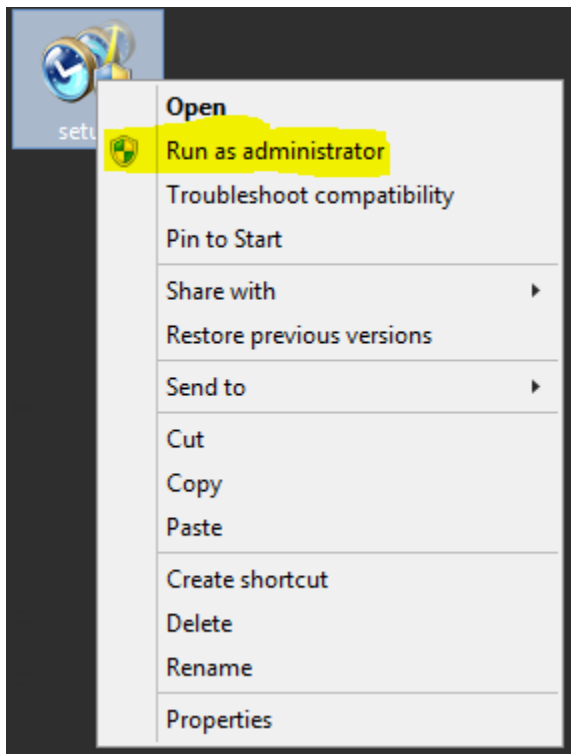
CLICK ON FINISH.



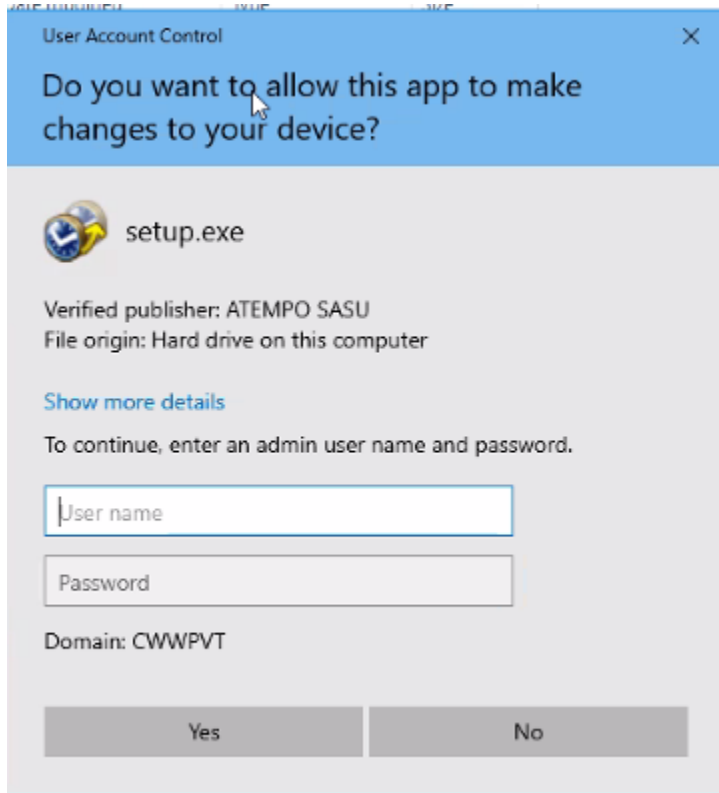
HOW TO UPGRADE AGENT

STEP 1:

RUN THE SETUP FILE AS ADMINISTRATOR.

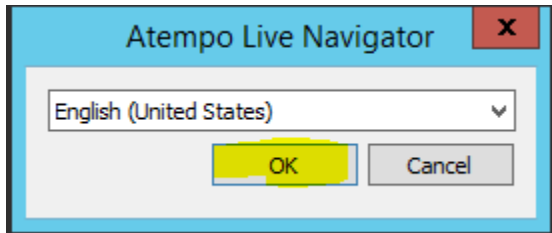


ENTER ADMINISTRATOR CREDENTIALS IF BELOW WINDOW POPUP.



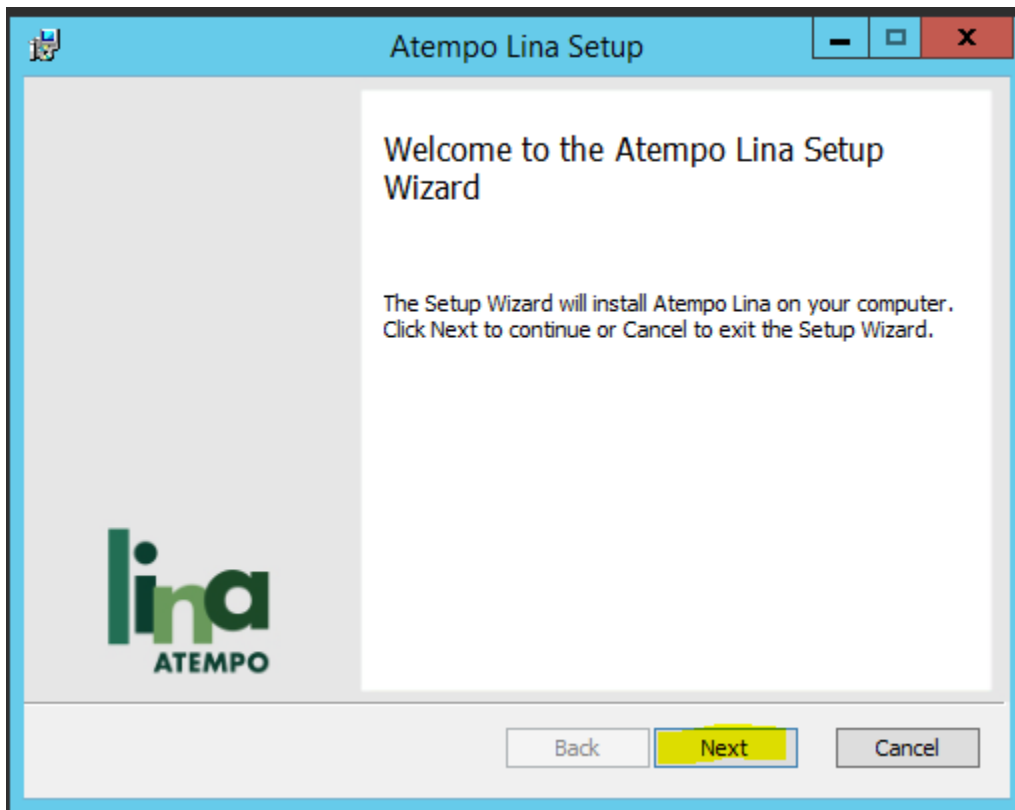
STEP 2:

SELECT LANGUAGE AND CLICK OK.



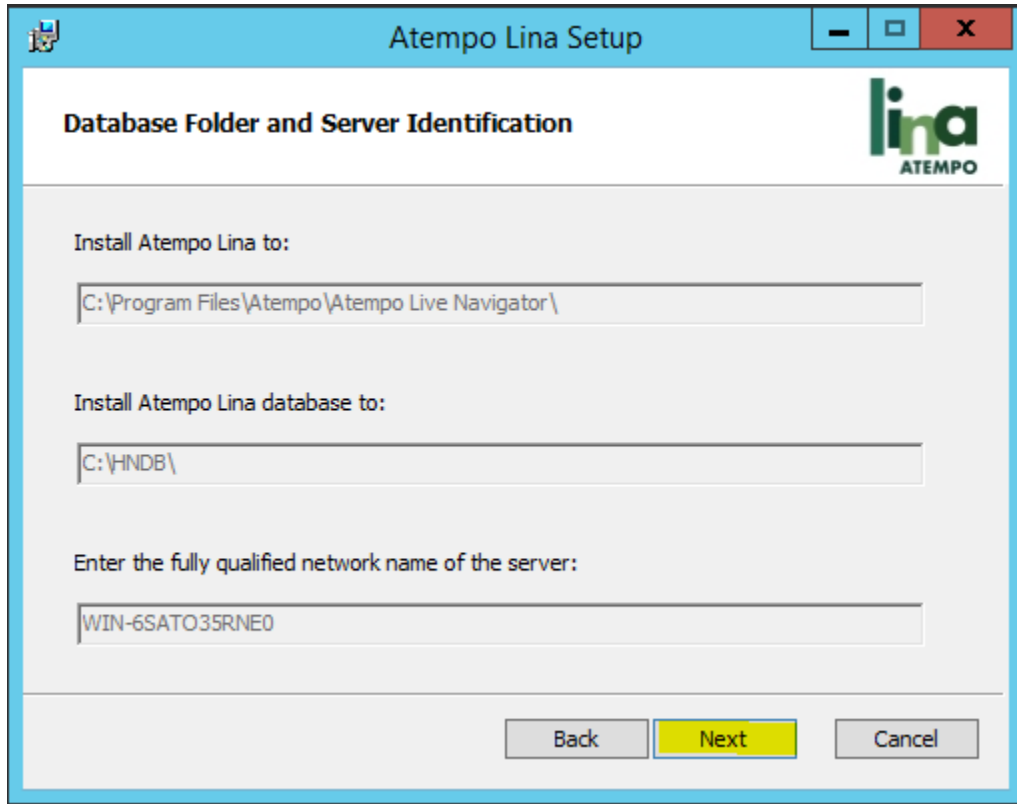
STEP 3:

CLICK ON NEXT.



STEP 4:

CLICK ON NEXT.



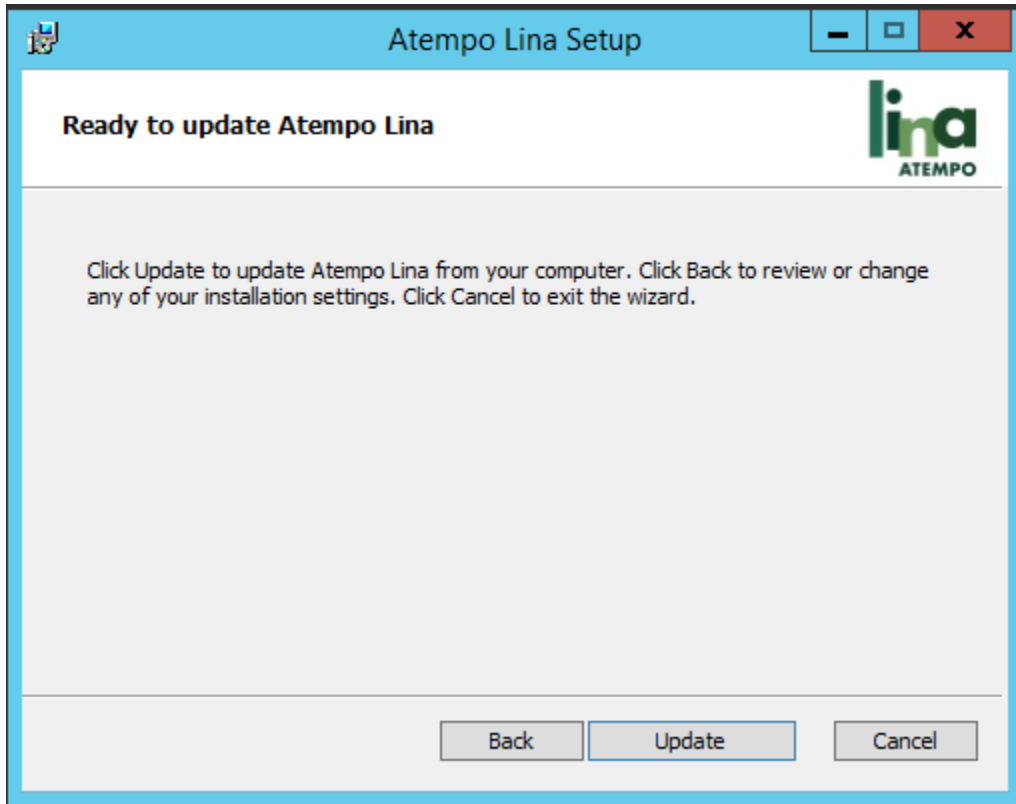
The screenshot shows a Windows-style window titled "Atempo Lina Setup". The window has a blue title bar with standard minimize, maximize, and close buttons. The main content area is titled "Database Folder and Server Identification" and features the "lina ATEMPO" logo in the top right corner. The window contains three text input fields:

- The first field is labeled "Install Atempo Lina to:" and contains the text "C:\Program Files\Atempo\Atempo Live Navigator\".
- The second field is labeled "Install Atempo Lina database to:" and contains the text "C:\HNDB\".
- The third field is labeled "Enter the fully qualified network name of the server:" and contains the text "WIN-6SATO35RNE0".

At the bottom of the window, there are three buttons: "Back", "Next", and "Cancel". The "Next" button is highlighted in yellow, indicating it is the intended action.

STEP 5:

CLICK ON UPDATE.



STEP 6:

CLICK ON FINISH.

